

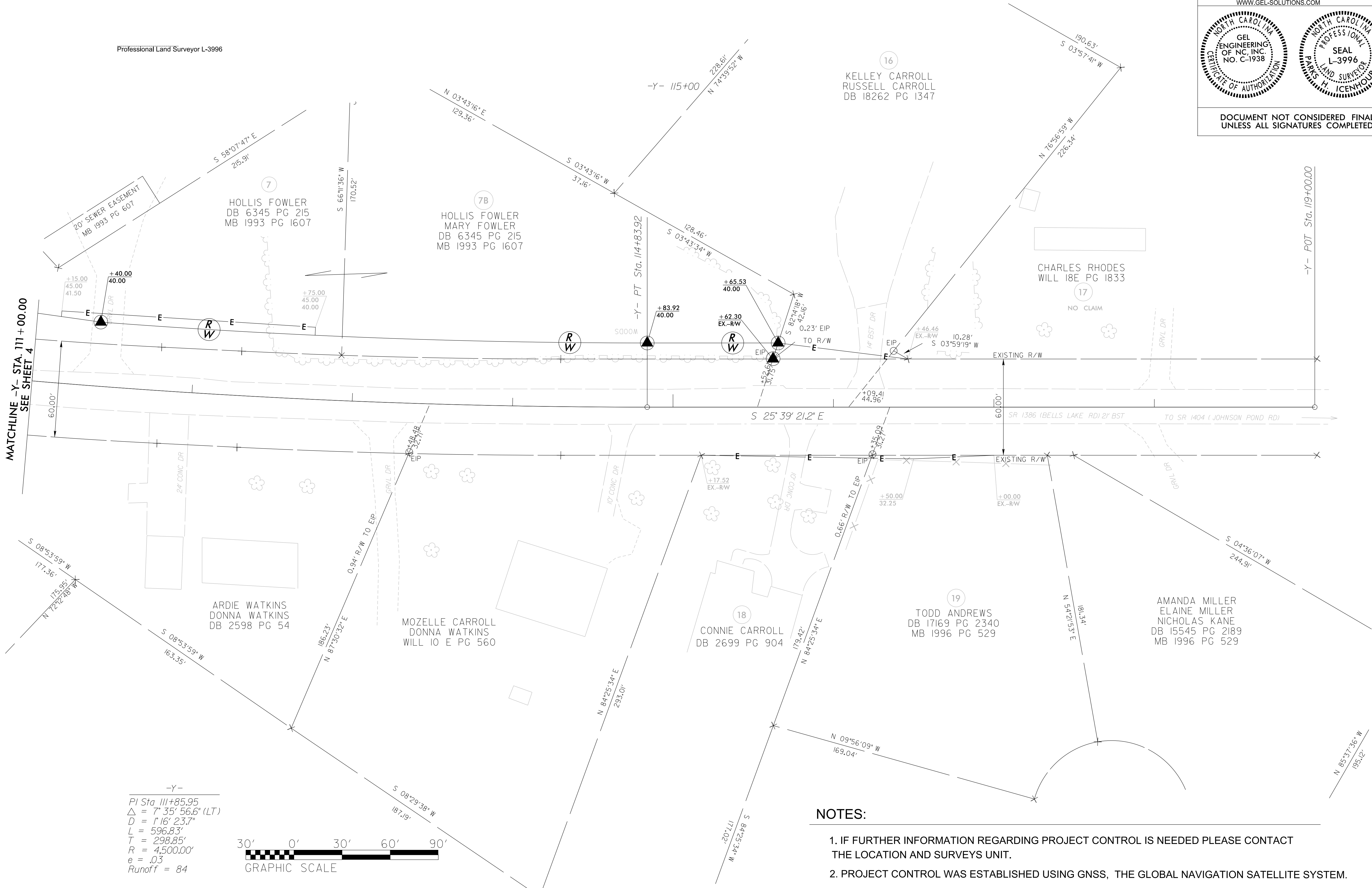
REVISIONS

I, PARKS H. ICENHOUR JR., certify that the right of way and permanent easement monumentation for this project shown herein was completed under my direct and responsible charge from an actual survey made under my supervision; that all horizontal closures had a minimum ratio of precision of 1:10,000 (Class A). Field work was performed from 10/20/2025 to 10/27/2025 and all coordinates are based on NAD83/2011; That this survey was performed to meet the requirements of 21NCAC 56.1600 as applicable.

This 3rd day of December, 2025.

Professional Land Surveyor L-3996

PROJECT REFERENCE NO.	SHEET NO.
HL-0008Q	RW07
Location and Surveys	
 an Affiliate of THE GEL GROUP, INC. 2700 SUMNER BLVD. SUITE 106 RALEIGH, NC 27616 (919) 544-1100 WWW.GEL-SOLUTIONS.COM	
	
DOCUMENT NOT CONSIDERED FINAL UNLESS ALL SIGNATURES COMPLETED	



-Y-
PI Sta. 111+85.95
 $\Delta = 7^{\circ}35'56.6"$ (LT)
 $D = 1^{\circ}16'23.7"$
 $L = 596.83'$
 $T = 298.85'$
 $R = 4,500.00'$
 $e = .03$
Runoff = 84

